

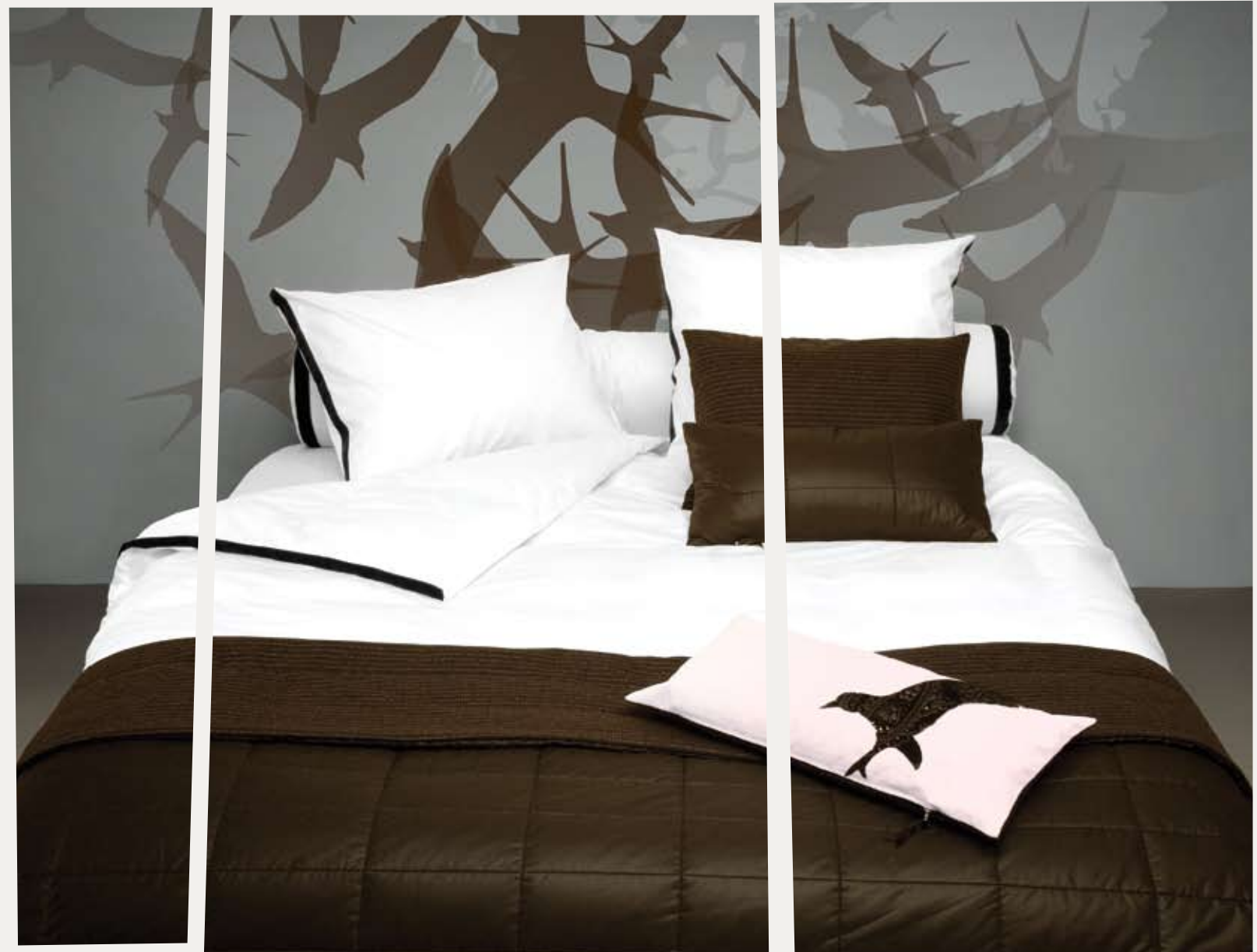
Mrs.Me presents

Falcon and the Swan

featuring: The Living Room, The Dining Room and The Bedroom



HOME COUTURE



starring (in order of appearance):

Birdstripe • Vintage • Comfort Mohair • Fox Glaze • Caviar Glaze • Bird Glaze • Marigold • Antique Glaze • Silver Glaze • Table Manners • Runner •
Frock • Velvet Posy • Pinstripe • Tuxedo • Daisy Glaze • Caviar Bar • Cocktail • Gold Bar • Fools Gold • Chocolate Bar • Bird Blush • Falcon • Swan •
Silver Bar • Pin-up Stripe • Moccha Blossom *and others...*

Falcon and the Swan

Mrs.Me proudly presents: Falcon and the Swan, the new collection of home couture for the dining, living and bedroom.

Mrs.Me has been inspired by the silver screen and the black night. The collection lives and breathes the atmosphere from Hitchcock movies and detective stories from the same time. In her bedroom we find bed linen echoing the glamorous nightlife of those days; pitch-black Tuxedos with a band of velvet, and honey-sweet Cocktails with bows designed to decorate the bed. The mohair blankets of exceptional size (220 x 240 cm) in matching colours highten the luxurious image.

Like silent witnesses the cushions with silhouettes of lasered and embossed leather blend perfectly with exciting 'Pin-up Stripe' throws on sofas and beds. In Mrs.Me's dining room her guests enjoy dinner from deep dark linen.

Mrs.Me has again chosen special materials, produced in regions known for their expertise. Gossamer cotton percale (yarn count 500) and lustrous cotton satin (yarn count 300) from Egypt, supersoft lambswool from Scotland, lush mohair from South Africa and smooth Italian leather.

This series full of allure and suspense is created using contrasting colours with tasty names like Milk & Caviar, Honey & Chocolate, accents in glamorous Gold & Silver and sparkling Blush & Tangerine.

Spellbound...

Chapters

Nice to meet you...	page 4
The Living Room	page 6
The Dining Room	page 10
The Bedroom	page 14
Collection overview	page 23
Credits	page 27
Get in touch	page 28



HOME COUTURE

Nice to meet you...

Company

Mrs.Me is a design company with a focus on home textiles and interior fashion, founded in 2003 and based in Amsterdam. Mrs.Me is Lianne Ernst and Mariëlle Kreulen. Lianne Ernst is responsible for product design, Mariëlle Kreulen is handling commercial matters.

Collections

In her own way Mrs.Me translates the latest trends in fashion in a sparkling range of products which can be found in home stores specialized in contemporary interior design, luxurious gift shops and stores selling quality beds and bed linen.

Their first collection Bedtime Stories was successfully launched in the Netherlands in 2005, and is now followed up by 'Falcon and the Swan', which will be presented internationally.

Custom Made

Mrs.Me creates custom made products and collections for various clients such as hotels, department stores and home textile brands, for example for Rijksmuseum Amsterdam and Dutch furniture brand Bruut. She also creates special products and designs for your own private bedroom.

Interior Decoration

Mrs.Me designs interior concepts, for example for livings, bedrooms, hotel rooms and hotel lounges. Her specialty is exclusive and personalized bed and table linen.

Company values

Mrs.Me designs and develops products in accordance to the following standards

- * highest quality in fabrics
- * design value, inspired by the latest fashion
- * socially justified production.



The Living Room

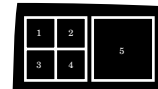
sofa entertainment

“And still the Raven, never flitting Still is sitting, still is sitting On the pallid bust of Pallas Just above my chamber door; And his eyes have all the seeming Of a demon’s that is dreaming And the lamplight o’er him streaming Throws his shadow on the floor And my soul from out that shadow That lies floating on the floor Shall be lifted-nevermore.”

EDGAR ALLEN POE



1. Vintage cushions on top of a Chocolate coloured Bird Stripe throw. 2. Throw Comfort Mohair in Blush, matching Bird Blush cushion on top. 3. Detail of the Bird Stripe throw, a blend of 50% alpaca and 50% wool with a printed design at the edges. 4. Silent witnesses. 5. Vintage cushion in a shade of green.



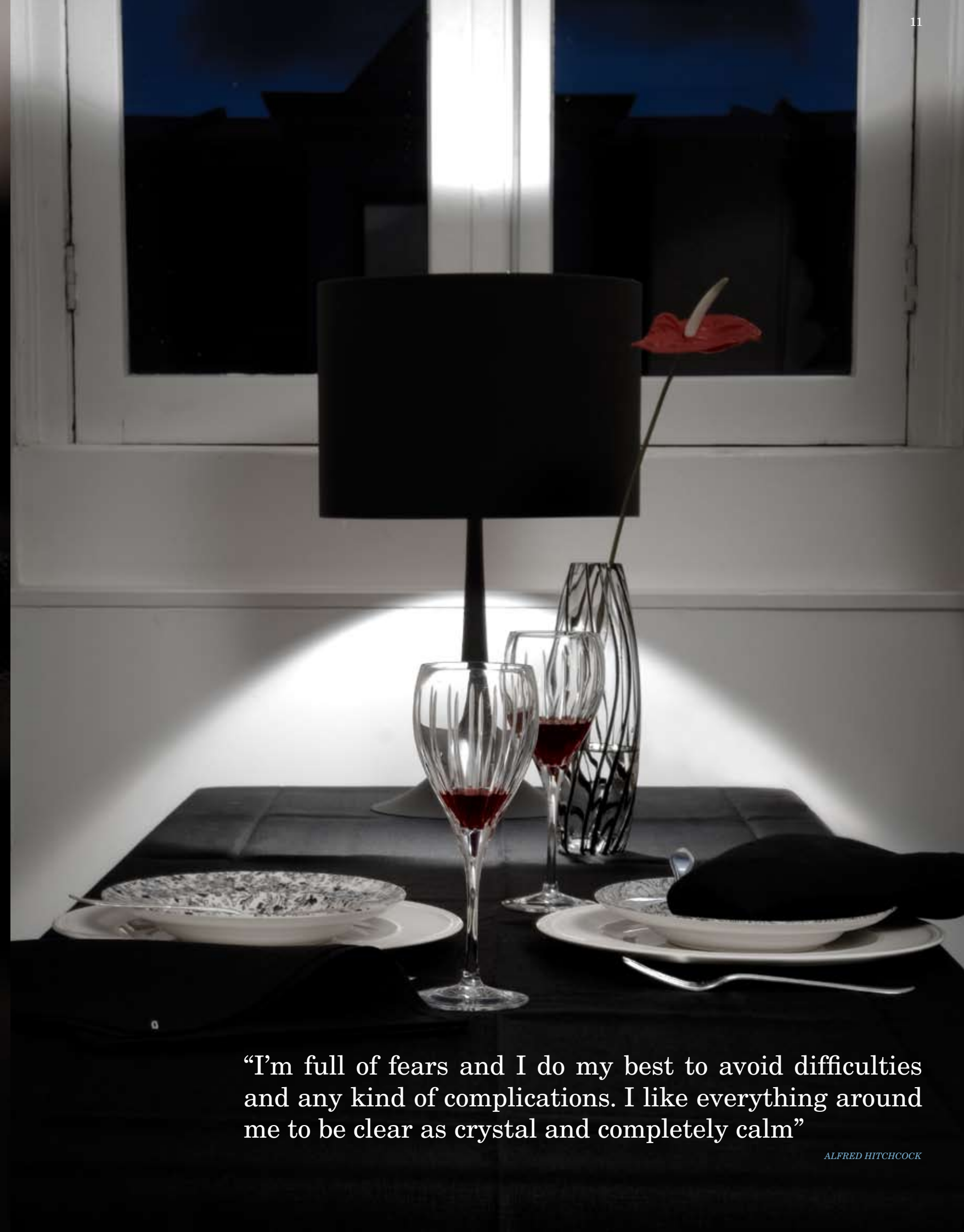
1. A sofa furnished with comfortable cushions and throw. Coated black linen **Caviar Glaze** cushions in two sizes. In the front the Silver metallized linen cushion **Fox** decorated with lasered skin. 2 & 3. Strange friends. 4. Out of the box an **Antique Glaze** cushion on the floor, a Silver metallized linen **Bird Glaze** cushion on top, decorated with a bird of paisley lasered cowskin in Tangerine. 5. This sofa is opulently covered with numerous cushions for ultimate relaxation. Front row a Golden poly-metal **Marigold** cushion, decorated with embossed leather flowers, next to a **Bird Glaze** cushion and a **Daisy Glaze** cushion, both of Silver metallized linen, decorated with lasered skin. Back row a **Silver Glaze** cushion, a floral **Vintage** cushion and a **Fools Gold** cushion. Luxurious large **Comfort Mohair** throw in the colour Mushroom.

The Dining Room

invitation for dinner at eight R.S.V.P

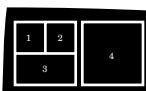
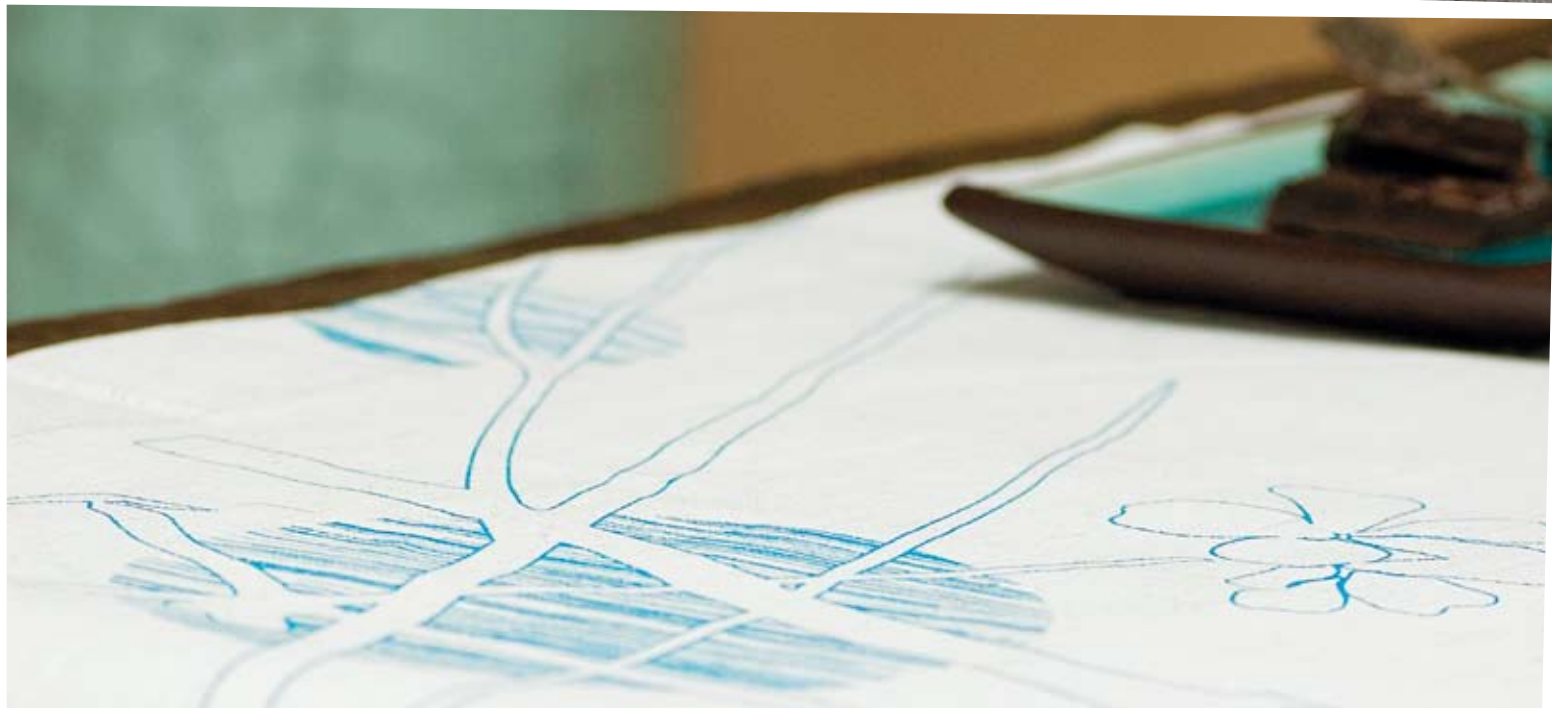
“Mrs. Peck? Mrs. Peck, I made a very poor introduction of myself to you. I know that. I’m a stranger in your house that you love and I’m here to do something that’s not very pleasant so I don’t expect you to like me. But I have feelings too, Mrs. Peck. Now I’m sorry about being untidy. That’s something that I can’t control. That’s a fault of mine that I, I, I don’t know, I just can’t correct that. I’ve tried many years. I’m just very untidy, that’s my nature. But I’ve never been un-, I’ve never been rude to you, Mrs. Peck.”

from 'DOUBLE SHOCK'



“I’m full of fears and I do my best to avoid difficulties and any kind of complications. I like everything around me to be clear as crystal and completely calm”

ALFRED HITCHCOCK



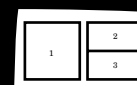
1. Runner **Birch-Azur**, runner in off white canvas with floral design in Azur. 2. Runner **Birch-Copper**, runner in off white canvas with floral design in Copper. 3. A detail of the Runner **Birch-Azur**. 4. **Table Manners Black-Blush**, table cloth and napkins in Black linen with Blush details.

The Bedroom

we'll make it a night to remember

“Oh, well, I was in the bedroom. I was checking some things and I heard him open the front door and he didn't say anything. Gee, it's funny how people are different, isn't it? Now you take myself. When I come home from a trip, uh, first thing I do is I say, “Honey, you here?”

from 'PRESCRIPTION:MURDER'

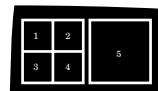
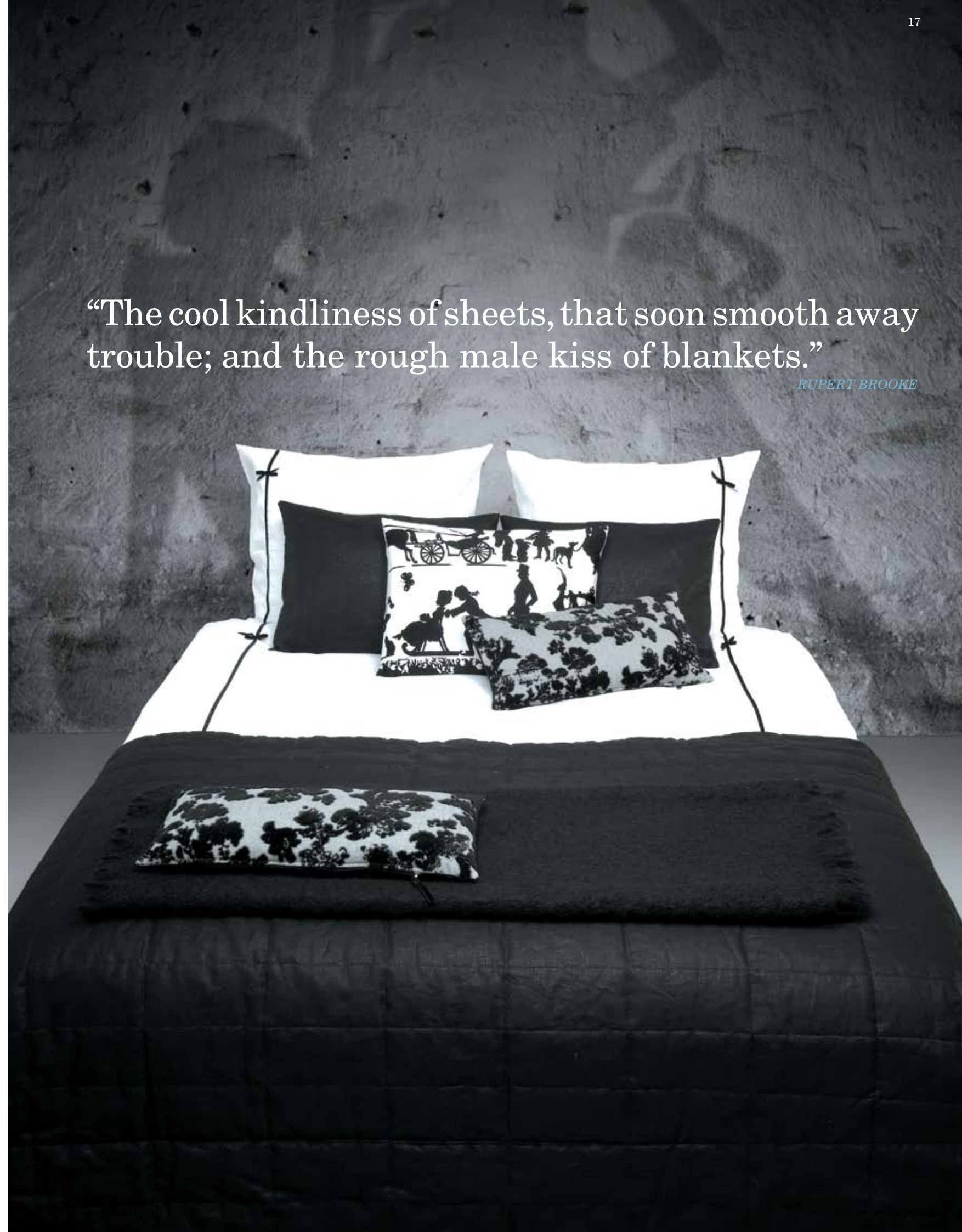


1. Detail of the duvet cover entitled **Frock**, the white crinkled cotton is covered with little black velvet bows. 2. Detail of a **Vintage** cushion in black and white with cameo design, made of antique fabric and therefore one of a kind just like all other **Vintage** cushions shown. 3. Egyptian cotton satin **Pinstripe** pillow covers finished with Caviar piping and a Silver metallized linen **Fox Glaze** cushion with lasered animal skin application baroque style.

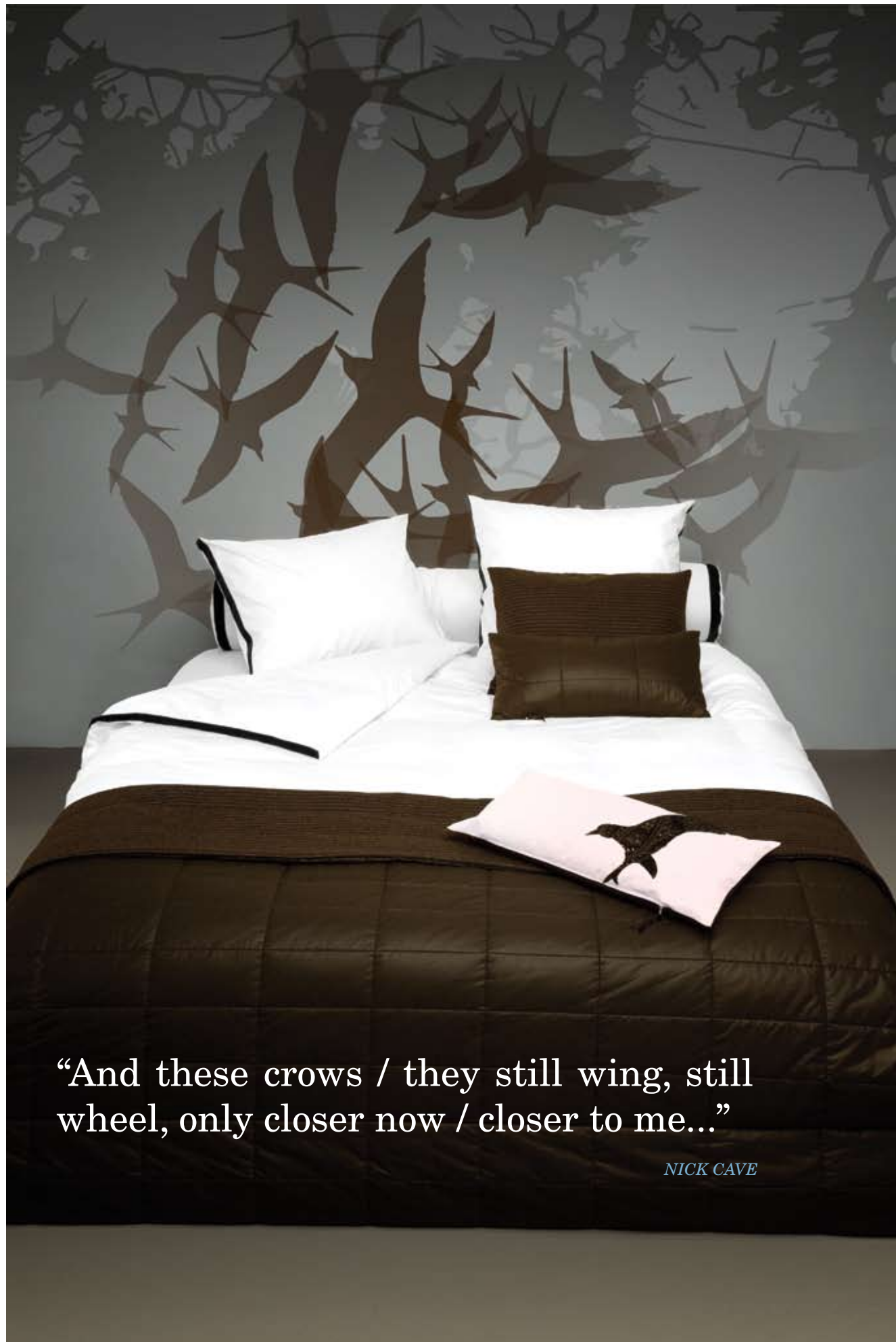


“The cool kindness of sheets, that soon smooth away trouble; and the rough male kiss of blankets.”

RUPERT BROOKE



1. A raven overlooking Egyptian cotton satin **Pinstripe** pillow covers and a metallized linen **Fox Glaze** cushion with lasered skin application. On the bed a padded black linen bed-end spread **Caviar Glaze**. At the end of the bed a **Bird Stripe** throw in Graphite colour. 2. Flocked cotton **Velvet Posy** cushions, reverse wool felt. 3. Detail of the Silver metallized linen **Daisy Glaze** cushion with floral lasered skin application. 4. This bed is made with duvet covers in deep dark black Egyptian cotton satin **Tuxedo** style, on top a reversible bed-end spread **Caviar Glaze**. For extra comfort cushions **Daisy Glaze** and **Caviar Glaze**. 5. The crinkled cotton **Frock** duvet cover set decorated with little velvet bows, accompanied by cushions and bed-end spread **Caviar Glaze**. In this bedroom also a **Vintage** cushion with cameo design, **Velvet Posy** cushions and a **Caviar Comfort Mohair** throw.



“And these crows / they still wing, still
wheel, only closer now / closer to me...”

NICK CAVE

The bed is made with crispy white Egyptian cotton percale, with a Chocolate velvet band finishing, **Tuxedo** style. Behind the pillows matching **Neckroll** pillows. Padded bed-end spread and cushions **Chocolate Bar**, reverse is supersoft pinstriped lambswool. A **Bird Blush** cushion on the bed-end, made of Blush coloured canvas with a bird application in paisley patterned lasered animal skin, reverse pinstripe wool.



Divinely luxurious duvet cover and pillow covers **Cocktail** with matching **Neckroll** pillows, all in Honey coloured Egyptian cotton satin, blend perfectly with Golden metal / polyester blend cushions **Fools Gold** and **Marigold** (application of embossed leather flowers). The **Comfort Mohair** throw is the perfect finish for this *glam-room*.

“Oh, don't let's ask for the moon.
We've already got the stars.”

BETTY DAVIS



Seriously seductive bedroom, where we finally meet the **Falcon** and the **Swan** in front of an Egyptian cotton satin **Pinstripe** duvet cover in White & Honey. **Swan and Falcon** cushions, made of suede on a lambswool herringbone front in the colour Shadow. Silver metallized linen bed-end spread **Silver Bar**, reverse herringbone wool in the colour named Mist, reverse is shown here. On top the **Pin-up Stripe** wrap in Graphite, the pinup girl on a swing almost mysteriously hidden between the stripes. This throw is of an exceptional size 75cm x by 250cm, suitable to cover the end of the bed, wear around the shoulders or put over the knees. Therefore Mrs.Me likes to call it *wrap*. Reversed **Caviar Glaze** cushion on top for a final touch.



1. The bedroom in a different colour scheme. In order of appearance an Egyptian cotton percale duvet cover and pillow boxes **Tuxedo** style in the colour Cement finished with velvet Honey coloured bands. Silver metallized linen bed-end spread **Silver Bar** and cushions **Silver Glaze**, reverse of both herringbone wool in the colour Mist. Tangerine suede **Falcon** and the **Swan** cushions, a **Pin-up Stripe** wrap in matching colour. Last ingredient for this bedroom is the unique **Vintage** cushion. 2. Detail of the unique dotted **Vintage** cushion made of antique fabric and therefore one of a kind. 3. Detail of the Tangerine **Falcon** cushion in suede on a woollen herringbone background. 4. Detail of the **Pin-up Stripe** wrap made of 100% Scottish lambswool.

“Well the, uh, mattress is soft, and there’s hangers in the closet and stationery with ‘Bates Motel’ printed on it, in case you want to make your friends back home feel envious....”

from: 'PSYCHO'



An immaculate exciting bedroom dressed in a Chocolate **Tuxedo**-style duvet cover and pillow boxes made of Egyptian cotton percale, yarn count 500. Chocolate padded bed-end spread **Chocolate Bar**, reverse soft pinstripe lambswool. Matching padded cushions **Chocolate Bar**, shown reverse. In front coated canvas **Bird Blush** cushions with bird application in paisley pattern lasered skin. At the end of the bed a Blush **Comfort Mohair** throw and a **Moccha Blossom** cushion on top. Dare to try.

DUVET COVERS

Duvet cover sets, matching fitted sheets and neck-roll pillows

Our bed linen is made of the finest Egyptian cotton in two different qualities; one range in cotton percale, yarn count 500, the other in cotton satin, yarn count 300. To keep our products in good condition and long lasting, we advice you to wash items at 40° and please, do not tumble dry.

Duvet Covers come in the following sizes:

- Single 140 x 200 + 40 cm
- Queen 200 x 200 + 40 cm
- King 240 x 200 + 40 cm

Neckroll Pillows are indispensable for a convenient rest or just reading a (suspense) book. Our **Neckroll Pillows** are available in different colours and qualities, matching our duvet covers Pinstripe, Tuxedo, Cocktail and Frock. Available in the following sizes:

- Medium ø 25 x 80 cm
- Large ø 25 x 90 cm

Fitted Sheets are available in different colours and qualities, matching our duvet covers. In the following sizes:

- Single mattress size 90 x 200 / 90 x 210 / 90 x 220 cm
- Queen mattress size 160 x 200 / 160 x 210 / 160 x 220 cm
- King mattress size 180 x 200 / 180 x 210 / 180 x 220 cm

special sizes can be made to order / prices available on request



111.1
Pinstripe Satin
White / Honey pinstripe
Honey piping
Egyptian cotton satin
yarn count 300

- Single • Queen • King
- set of 2 pillow covers

matching fitted sheets available



111.2
Pinstripe Satin
White / Caviar pinstripe
Caviar piping
Egyptian cotton satin
yarn count 300

- Single • Queen • King
- set of 2 pillow covers

matching fitted sheets available



112.1
Tuxedo Percale
White
Chocolate velvet band
Egyptian cotton percale
yarn count 500

- Single • Queen • King
- set of 2 pillow covers

matching fitted sheets available



112.2
Tuxedo Percale
Cement
Honey velvet band
Egyptian cotton percale
yarn count 500

- Single • Queen • King
- set of 2 pillow covers

matching fitted sheets available



112.3
Tuxedo Percale
Chocolate
Chocolate velvet band
Egyptian cotton percale
yarn count 500

- Single • Queen • King
- set of 2 pillow covers

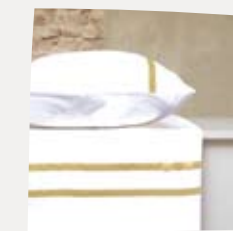
matching fitted sheets available



113.1
Tuxedo Satin
Caviar
Caviar velvet band
Egyptian cotton satin
yarn count 300

- Single • Queen • King
- set of 2 pillow covers

matching fitted sheets available



114.1
Cocktail Percale
White
Honey velvet ribbons & bow
Egyptian cotton percale
yarn count 500

- Single • Queen • King
- set of 2 pillow covers

matching fitted sheets available



115.1
Cocktail Satin
Honey
Honey velvet ribbons & bow
Egyptian cotton satin
yarn count 300

- Single • Queen • King
- set of 2 pillow covers

matching fitted sheets available



116.1
Frock
White
Caviar velvet ribbons & bow
cotton poly / Egyptian cotton
percale yarn count 500

- Single • Queen • King
- set of 2 pillow covers

matching fitted sheets available



611.5 Neckroll Pillow Percale
White / Caviar velvet band
Egyptian cotton percale
yarn count 500

Sizes M ø 25 x 80 cm
L ø 25 x 90 cm

611.1 Neckroll Pillow Percale
White / Honey velvet band
Egyptian cotton percale
yarn count 500

611.2 Neckroll Pillow Percale
White / Chocolate velvet band
Egyptian cotton percale
yarn count 500

611.3 Neckroll Pillow Percale
Cement / Honey velvet band
Egyptian cotton percale
yarn count 500

611.4 Neckroll Pillow Percale
Chocolate / Chocolate velvet band
Egyptian cotton percale
yarn count 500

612.1 Neckroll Pillow Satin
Honey / Honey velvet band
Egyptian cotton satin
yarn count 300

612.2 Neckroll Pillow Satin
Caviar / Caviar velvet band
Egyptian cotton satin
yarn count 300



Fitted Sheet
in different colours and
qualities, matching our duvet
covers

- Single • Queen • King

511.1 Fitted Sheet Percale
White
Egyptian cotton percale
yarn count 500

511.2 Fitted Sheet Percale
Cement
Egyptian cotton percale
yarn count 500

511.3 Fitted Sheet Percale
Chocolate
Egyptian cotton percale
yarn count 500

512.1 Fitted Sheet Satin
Honey
Egyptian cotton satin
yarn count 300

512.2 Fitted Sheet Satin
Caviar
Egyptian cotton satin
yarn count 300

BED END SPREADS

starring: Gold bar, Chocolate Bar, Caviar Bar and Silver Bar

Our Bed-end Spreads are reversible; the front is padded fabric, reverse is soft lambswool. The sizes of the bed-end spreads are 140 x 260 cm or 150 x 260 cm. Exact measures for each style are indicated in the product descriptions below.



311.1
Gold Bar

front: padded Gold metal/
polyester blend
reverse:
Sherry herringbone wool

150 x 260 cm



312.1
Chocolate Bar

front: padded Chocolate
polyester
reverse:
Chocolate pinstripe wool

150 x 260 cm



313.1
Caviar Bar

front: padded Caviar coated
linen
reverse:
Shadow herringbone wool

140 x 260 cm



313.2
Silver Bar

front:
padded Silver metallized
linen
reverse:
Mist herringbone wool

140 x 260 cm

CUSHIONS

starring: Chocolate Bar, Fools Gold, Moccha Blossom, Velvet Posy and others...

Our cushions are reversible; the front is shiny or mat material, reverse is soft (lambs)wool. Cushions are available in two sizes • Small 30 x 60 cm • Medium 45 x 60 cm feather cushion included



411.1
Chocolate Bar

front: padded Chocolate
polyester
reverse:
Chocolate pinstripe wool

S 30 x 60 cm
M 45 x 60 cm



412.1
Fools Gold

front:
Gold metal / polyester blend
reverse:
Sherry herringbone wool

S 30 x 60 cm
M 45 x 60 cm



414.1
Moccha Blossom

front:
Birch Blush floral poly-silk
reverse:
Sherry herringbone wool

S 30 x 60 cm
M 45 x 60 cm



415.1
Caviar Glaze

front:
Caviar coated linen
reverse:
Shadow herringbone wool

S 30 x 60 cm
M 45 x 60 cm



416.1
Silver Glaze

front:
Silver metallized linen
reverse:
Mist herringbone wool

S 30 x 60 cm
M 45 x 60 cm



419.1
Velvet Posy

front:
Caviar flocked cotton
reverse:
Caviar wool felt

S 30 x 60 cm
M 45 x 60 cm

THROWS AND BLANKETS

starring: Pin-up Stripe, Bird Stripe, Comfort Mohair

Our Throws and Blankets come in various sizes and qualities. Exact measures and compositions for each style are indicated in the product descriptions below.



211.1
Pin-up Stripe

Tangerine / Mist
100% lambswool

75 x 250 cm



211.2
Pin-up Stripe

Graphite / Mist
100% lambswool

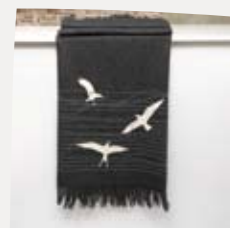
75 x 250 cm



214.1
Bird Stripe

Chocolate / Mist
50% alpaca / 50% wool

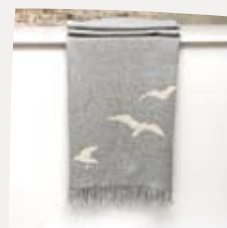
140 x 200 cm



214.2
Bird Stripe

Graphite / Mist
50% alpaca / 50% wool

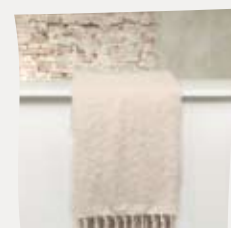
140 x 200 cm



214.3
Bird Stripe

Silver / Mist
50% alpaca / 50% wool

140 x 200 cm



215.1
Comfort Mohair

Mushroom
78% mohair / 22% wool

130 x 180 cm
220 x 240 cm



215.2
Comfort Mohair

Blush
78% mohair / 22% wool

130 x 180 cm



215.3
Comfort Mohair

Truffle
78% mohair / 22% wool

130 x 180 cm
220 x 240 cm



215.4
Comfort Mohair

Caviar
78% mohair / 22% wool

130 x 180 cm
220 x 240 cm

SPECIAL CUSHIONS

starring: Fox Glaze, Daisy Glaze, Marigold, Antique Glaze and others...

Our Special Cushions are reversible; the front is shiny or mat material with an application in leather, skin or suede, reverse is soft (lambs)wool. Special Cushions are available in one size only • Small 30 x 60 cm feather cushion included



416.4
Fox Glaze

front: lasered cowskin on
Silver metallized linen
reverse:
Shadow herringbone wool

S 30 x 60 cm



416.2
Daisy Glaze

front: lasered cowskin on
Silver metallized linen
reverse:
Mist herringbone wool

S 30 x 60 cm



412.2
Marigold

front: embossed leather on
Gold metal-polyester blend
reverse:
Sherry herringbone wool

S 30 x 60 cm



416.5
Antique Glaze *SILVER*

front: embossed leather on
metallized linen
reverse:
Mist herringbone wool

S 30 x 60 cm



415.2
Antique Glaze *CAVIAR*

front: embossed leather on
Caviar coated linen
reverse:
Shadow herringbone wool

S 30 x 60 cm



413.1
Bird Blush

front: Chocolate lasered
cowskin on Blush coated linen
reverse:
Chocolate pinstripe wool

S 30 x 60 cm



416.3
Bird Glaze

front: Tangerine lasered
cowskin on metallized linen
reverse:
Tangerine herringbone wool

S 30 x 60 cm



417.1 Swan
418.1 Falcon

front: Tangerine suede on
Tangerine herringbone wool
reverse:
Tangerine herringbone wool

S 30 x 60 cm



417.2 Swan
418.2 Falcon

front: Shadow suede on
Shadow herringbone wool
reverse:
Shadow herringbone wool

S 30 x 60 cm

VINTAGE CUSHIONS

starring silky old-time favourites

Vintage cushions are made of antique fabrics, therefore each cushion is unique and *one of a kind*. Reverse of Vintage is Silver metallized linen. feather cushion included



420 Vintage

front: Tangerine selection of vintage material
reverse:
Silver metallized linen

S 30 x 60 cm
M 45 x 60 cm



420 Vintage

front: Blush selection of vintage material
reverse:
Silver metallized linen

S 30 x 60 cm
M 45 x 60 cm



420 Vintage

front: Ocre selection of vintage material
reverse:
Silver metallized linen

S 30 x 60 cm
M 45 x 60 cm



420 Vintage

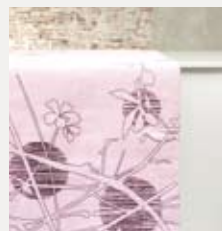
front: Sage selection of vintage material
reverse:
Silver metallized linen

S 30 x 60 cm
M 45 x 60 cm

TABLE LINEN

starring: Table manners, Runner Blush-Black and others...

Our Table Linen collection is a small range consisting of a tablecloth, matching runners and napkins. Exact measures and qualities are indicated in the product descriptions. personalized table linen on request



711.1 Runner Blush-Black

Black floral print on Blush coated canvas

50 x 150 cm



712.1 Table Manners

Table Cloth
100% Black Linen
Blush piping finishing

150 x 280 cm



712.2 Table Manners

Napkin
100% Black Linen
Blush button hole

50 x 50 cm



711.2 Runner Birch-Azur

Azur floral print on Birch coated canvas

50 x 150 cm



711.3 Runner Birch-Copper

Copper floral print on Birch coated canvas

50 x 150 cm

Starring

Falcon and the Swan
and others...

Images

Went&Navarro
studio for image-architecture

This studio was founded by a young Dutch duo, both graduated from the Design Academy Eindhoven, The Netherlands. Focusing on visual language, they develop and create identity- from research and concept to still image- by means of using photography, image-making and information-architecture. For more information check their website www.wentennavarro.nl

Graphic Design

Went&Navarro in cooperation with Mrs.Me

Quotes

(in alphabetical order)

Rupert Brooke - The Great Lover (1914)
Nick Cave - Euchrid Eucrow in And the Ass saw the Angel (1989)
Bette Davis - Attributed
Alfred Hitchcock – Attributed
Alfred Hitchcock - Norman Bates in Psycho (1960)
Peter Falk as Columbo in Prescription Murder (1968)
Peter Falk as Columbo in Double Shock (1973)
Edgar Allan Poe - The Raven (1845)

Special Thanks

(in alphabetical order)

Arjen, Bert sr, Bert jr, Floris, Inge, John, Karin,
Manon, Mien, Paul 1, Paul 2, Peter, Silver, Siska.

Press info

All images can be provided in high-resolution quality for publication.
Please contact us at
info@mrsme.com



HOME COUTURE

Mrs.Me

Oostenburgervoorstraat 252
1018 MR Amsterdam
The Netherlands

tel/fax +31 (0)20 320 3024
mob +31 (0)6 16 30 25 19

info@mrsme.com
www.mrsme.com